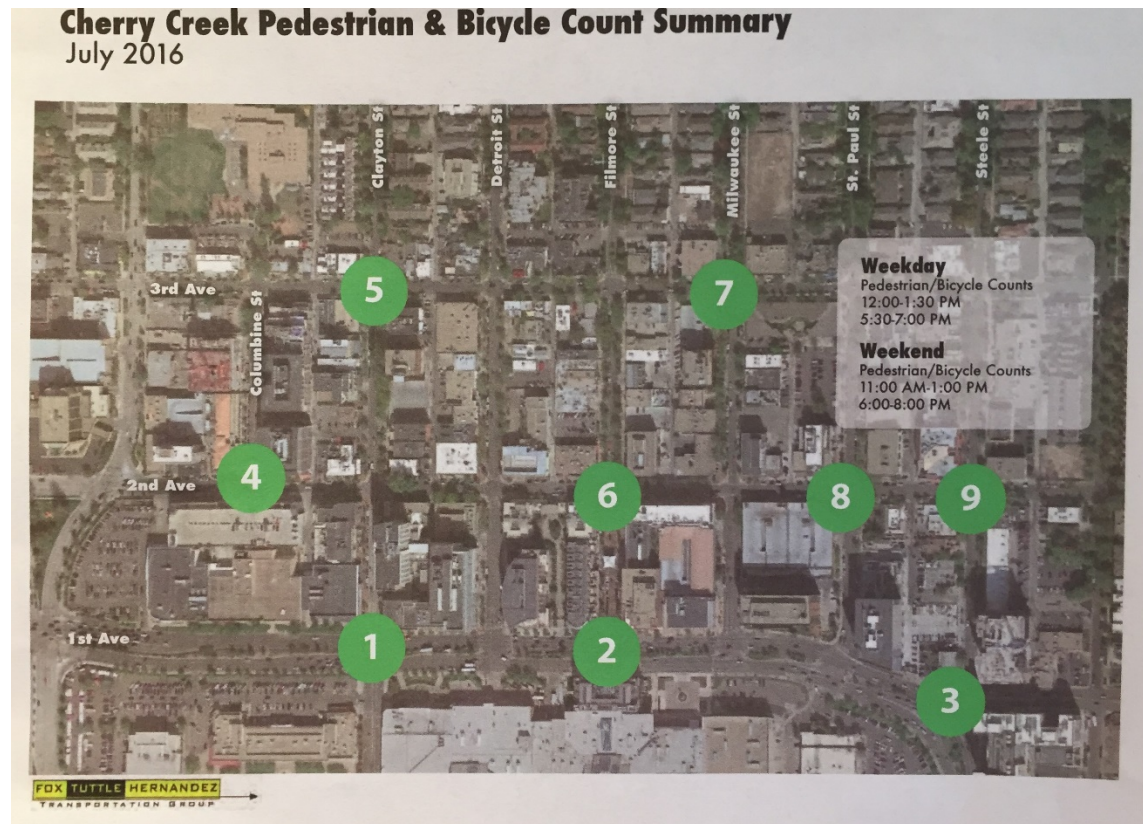


**Cherry Creek North Business Improvement District
Pedestrian and Bicycle Count Report, 2015-2017
Ellen Ittelson, Ittelson Planning & Implementation
August 2017**

The Cherry Creek North area has seen substantially increased development activity for the past several years. This development is resulting in more density and a greater mix of uses. As a result, the district has and will continue to gain residential, hospitality, and office uses, as well as more high-quality retail space on the ground floor of buildings. In response to this development activity, the Cherry Creek North Business Improvement District (CCN BID) made the decision to conduct annual pedestrian and bike counts beginning in July 2015 to gauge the impact of the new development on pedestrian and bike activity and patterns. The CCN BID engaged Fox-Tuttle-Hernandez (FTH) to conduct the counts. Carlos Hernandez and Molly Veldkamp of FTH recommended conducting the counts on a weekday (Wednesday) mid-day and evening and a Saturday mid-day and evening. The last week in July was selected to avoid overlap with special events. The times were selected to measure shopping and dining activity and avoid work commute walking and biking. Unless otherwise noted, the weather was pleasant and conducive to walking and biking.

The nine count locations (see map below) were selected to intercept pedestrians and bicyclists entering and leaving the district and measure activity at key interior intersections.



Selected intersections:

1. 1st and Clayton
2. 1st and Fillmore
3. 1st and Steele
4. 2nd and Columbine
5. 3rd and Clayton
6. 2nd and Fillmore
7. 3rd and Milwaukee
8. 2nd and St Paul
9. 2nd and Steele

In total between July 2015 and July 2017, the total number of pedestrians and bicycles counted at these nine locations was considerably higher. And the slight decrease in pedestrians counted in 2016 provides a more substantial increase. Most importantly, the number of pedestrians continues to outweigh bicycles by over 20 to one. The total number of bicycles counted has decreased each year.

	<u>Pedestrians</u>	<u>Bicycles</u>
2017	21,345	922
2016	17,154	1020
2015	<u>18,202</u>	<u>1141</u>
Change 2015-17	3,143	-219
% Change 2015-17	17%	-20%

The following sections of the report detail the counts in 2017, 2016, and 2015 and concludes with a comparison of the three years. Development projects and resulting sidewalk closures and conversely the opening of new developments affected the count numbers. Tables showing all the counts at each location in each direction are provided at the end of the report.

2017 Pedestrian and Bike Counts

Development Activity

Several major construction projects affected counts in 2017, and construction activity and sidewalk closures shifted from the west side of the district to the east:

- Civica, 200 block Fillmore east side, under construction and sidewalk closed adjacent to this mid-block development
- Milwaukee and 2nd northeast corner—hotel construction sidewalks on both streets fenced off and sidewalks closed. Milwaukee northbound traffic only and parking at the north end of block on both sides.
- St Paul Collection, 200 block—sidewalks on both sides of St Paul closed and St Paul one-way traffic south-bound with parking on both sides
- Due to construction on these blocks, Milwaukee was one-way northbound and St Paul one-way southbound, which impacted auto and bicycle traffic, not pedestrians

- ANB block reface and remodel
 - St Paul 100 block west side—sidewalk closed for north half of block
 - 2nd south side St Paul to St Paul-Milwaukee alley—sidewalk closed
- Steele 100 block west side—sidewalk closed for Laurel Condominiums

Conversely, many 2015 construction projects were completed with reopened sidewalks and new ground and upper level uses:

- Coda, 1st and Steele, northeast corner, was completed and the Hedge Row restaurant on the ground floor opened. The building also has a bike storage and repair space on the ground floor.
- The original portion of Cherry Creek Square at the southeast corner of 3rd and Milwaukee reopened with remodeled exterior and interior space for Mariel’s and Right Start as well as some new retail space yet to be leased.

A couple of changes just outside the CCN BID boundary affected pedestrian and bike counts. The Cherry Creek Shopping Center began charging for parking in January 2017. At 1st and Cook, southwest corner, TruFit and Olive & Finch opened, both attracting some foot traffic along 1st east of Steele. A large apartment building is nearing completion south of the retail/office building.

Pedestrian Counts, 2017

Pedestrian Counts by Intersection, July 2017

Intersection	Wed mid-day	Wed evening	Sat mid-day	Sat evening	Total
1 st -Clayton	697	545	1,782	633	3,657
1 st -Fillmore	484	292	1,124	434	2,334
1 st -Steele	428	259	367	292	1,346
2 nd -Columbine	910	602	947	776	3,225
3 rd -Clayton	508	349	630	582	2,069
2 nd -Fillmore	1,066	491	1,362	830	3,749
3 rd -Milwaukee	453	244	490	391	1,578
2 nd -St Paul	526	250	353	340	1,469
2 nd -Steele	<u>626</u>	<u>273</u>	<u>532</u>	<u>477</u>	<u>1,908</u>
Total	5,698	3,305	7,587	4,755	21,335

As in previous years, the 1st and Clayton and 2nd and Fillmore intersections has the highest number of pedestrians counted. 2nd and Columbine, 3rd and Clayton, and 1st and Fillmore also had substantial numbers. Saturday mid-day was busiest, followed by Wednesday mid-day, Saturday evening, and finally Wednesday evening. Of the 21,335 pedestrians counted, about 60 percent were travelling east west and the remainder north-south.

Bike Counts, 2017

As with walking, the greatest number of bicycles were counted on Saturday mid-day. East-west and north-south travel were about equal.

- Wednesday mid-day 193
- Wednesday evening 144
- Saturday mid-day 410
- Saturday evening 175
- Total 922

Generally, all three east-west streets had substantial numbers of bicyclists, and Clayton was the preferred north-south connection. St Paul was relatively little used in part because it was temporarily one-way south-bound to accommodate construction; St Paul is the signed bike route connection from 1st Avenue north to Colfax and City Park. The intersections and times with the highest bike counts were:

- Wednesday mid-day 3rd and Clayton (46/193)
- Wednesday evening 1st and Clayton (27/151)
- Saturday mid-day 1st and Clayton (81/387)
- Saturday evening 2nd and St Paul (42/196)

2016 Pedestrian and Bike Counts

Several major construction projects affected counts in 2016:

- Milwaukee and 2nd northeast corner—hotel construction sidewalks on both streets fenced off and sidewalks closed
- Buildings on the east and west side of Fillmore, 200 block, were demolished. On the east side, excavation began for development and on the west side the property was paved as a surface parking lot. Sidewalk on the east side closed and on the west side open.
- Named streets from 3rd Avenue north were being repaved

Conversely, many 2015 construction projects were completed with reopened sidewalks and new ground and upper level uses:

- RH (Restoration Hardware) on the south side of 1st opened, as did the pedestrian crossing
- Columbine-200 block
200/250 Columbine east side, and the Halcyon Hotel, west side, were completed and the sidewalks reopened. The Starbucks relocated from 3rd and Clayton to 3rd and Columbine.
- St Paul-100 block
100 St Paul building completed and 1st Bank and Del Frisco Grill opened on the ground floor
- 1st and Steele
Steele Creek, southeast corner completed and Matsuhisa restaurant and several retailers opened
Coda, northeast corner, nearing completion, fencing removed

Pedestrian Counts, 2016

In 2016, the busiest intersection was 2nd and Fillmore mid-day on Saturday. More pedestrians were walking east-west on 2nd than north-south on Fillmore. The following table shows the counts by intersection and day and time.

Pedestrian Counts by Intersection, July 2016

Intersection	Wed mid-day	Wed evening	Sat mid-day	Sat evening	Total
1 st -Clayton	537	374	927	501	2,339
1 st -Fillmore	345	290	632	387	1,654
1 st -Steele	234	223	209	192	858
2 nd -Columbine	809	315	749	511	2,384
3 rd -Clayton	435	290	749	462	1,936
2 nd -Fillmore	1,022	530	1,290	570	3,412
3 rd -Milwaukee	474	246	472	246	1,438
2 nd -St Paul	467	354	413	338	1,572
2 nd -Steele	<u>451</u>	<u>327</u>	<u>382</u>	<u>401</u>	<u>1,561</u>
Total	4,774	2,949	5,823	3,578	17,154

Just over 17,000 pedestrians were counted during the four time segments. Saturday mid-day was busiest followed by Wednesday mid-day, Saturday evening and Wednesday evening. Also of this total, about 60% were walking north-south and 40% east west.

Bicycle Counts, 2016

As with walking, the greatest number of bicycles were counted on Saturday mid-day. And likewise, about 60% of the bicycles were traveling east-west rather than north-south.

- Wednesday mid-day 195
- Wednesday evening 179
- Saturday mid-day 417
- Saturday evening 229
- Total 1,020

Generally, 3rd Avenue was the most used east-west connection, and Clayton the preferred north-south connection. St Paul was also well used; it is the signed bike route connection from 1st Avenue north to Colfax and City Park. The intersections and times with the highest bike counts were:

- Wednesday mid-day 1st and Clayton (37/195)
3rd and Milwaukee (36/195)
- Wednesday evening 3rd and Clayton (28/179)
- Saturday mid-day 1st and Clayton (76/417)
- Saturday evening 1st and Clayton (41/229)

2015 Pedestrian and Bike Counts

Several major construction projects affected counts in 2015:

- RH (Restoration Hardware) on the south side of 1st caused closure of the pedestrian crossing of 1st at Fillmore
- Columbine-200 block
200/250 Columbine—the full block face was under construction with the site and sidewalk fenced
Halcyon Hotel, west side, construction site fenced with a pedestrian walkway
- St Paul-100 block
100 St Paul construction fencing along St Paul, 1st and Steele
- 1st and Steele
Steele Creek, southeast corner, construction fencing
Coda, northeast corner, construction fencing

Pedestrian Counts, 2015

In 2015, the busiest intersection was 2nd and Fillmore mid-day on Saturday. More pedestrians were walking east-west on 2nd than north-south on Fillmore. The following table shows the counts by intersection and day and time.

Pedestrian Counts by Intersection, July 2015

Intersection	Wed mid-day	Wed evening	Sat mid-day	Sat evening	Total
1 st -Clayton	754	667	1,402	638	3,461
1 st -Fillmore	185	86	392	128	791
1 st -Steele	267	114	214	192	787
2 nd -Columbine	628	395	635	342	2,000
3 rd -Clayton	448	404	691	572	2,115
2 nd -Fillmore	1,030	614	1,555	867	3,886
3 rd -Milwaukee	409	327	537	391	1,664
2 nd -St Paul	418	270	394	358	1,440
2 nd -Steele	<u>568</u>	<u>333</u>	<u>533</u>	<u>444</u>	<u>1,878</u>
Total	4,707	3,210	6,353	3,932	18,202

Just over 18,000 pedestrians were counted at the four time segments. Saturday mid-day was busiest followed by Wednesday mid-day, Saturday evening and Wednesday evening. Also of this total, about 60% were walking east-west and 40% north-south.

Bicycle Counts, 2015

As with walking, the greatest number of bicycles were counted on Saturday mid-day. And likewise, about 60% of the bicycles were traveling east-west rather than north-south.

- Wednesday mid-day 222
- Wednesday evening 215
- Saturday mid-day 409

- Saturday evening 295
- Total 1,141

Unlike pedestrian patterns, the highest number of bicycles were at different intersections at each of the count times.

- Wednesday mid-day 3rd and Milwaukee (32/222)
- Wednesday evening 2nd and Fillmore (22/215)
- Saturday mid-day 1st and Clayton (59/409)
- Saturday evening 3rd at Clayton (41/295)