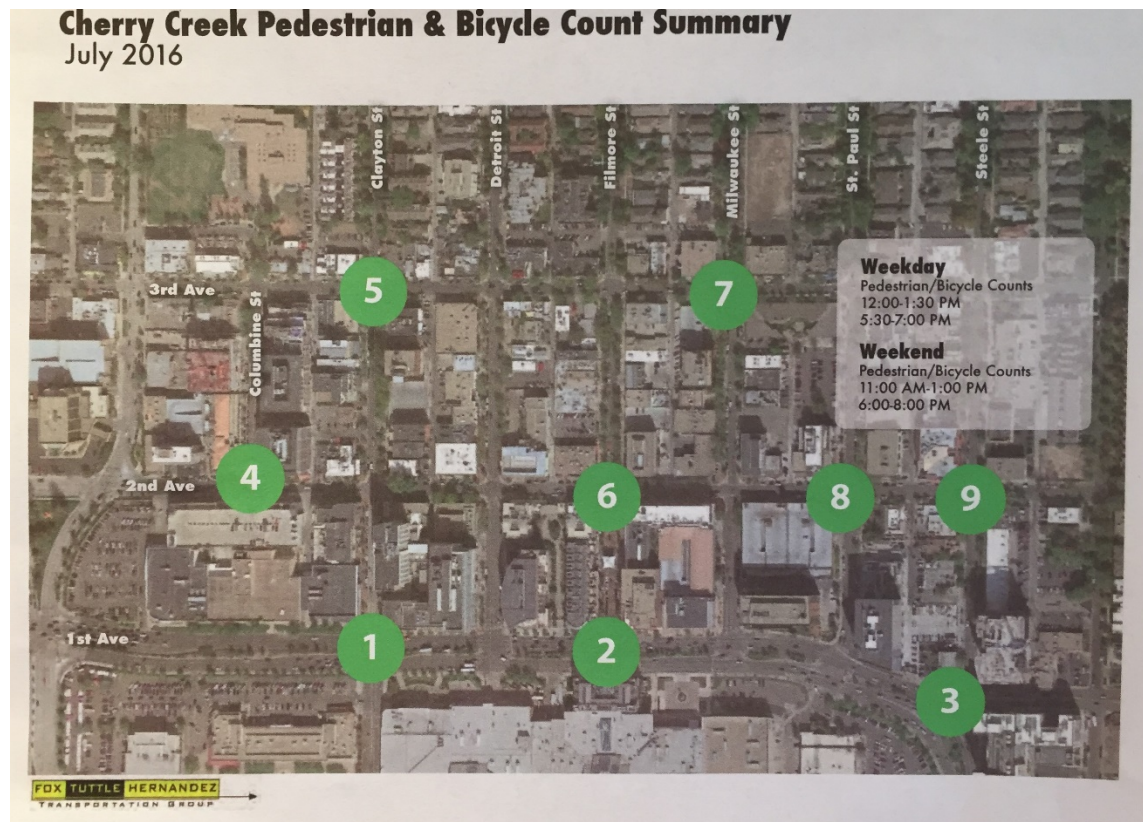


## Cherry Creek North Business Improvement District Pedestrian and Bicycle Count Report, 2015-2016

Ellen Ittelson, Ittelson Planning & Implementation  
August 2016

The Cherry Creek North area has seen substantially increased development activity for the past several years. This development is resulting in more density and a greater mix of uses. As a result, the district will gain several large residential buildings, three new hotels, more office space, as well as more high quality retail space on the ground floor of buildings. In response to this emerging change, the Cherry Creek North Business Improvement District (CCN BID) made the decision to conduct annual pedestrian and bike counts beginning in July 2015 to gauge the impact of the new development on pedestrian and bike activity and patterns. The CCN BID engaged Fox-Tuttle-Hernandez to conduct the counts. Carlos Hernandez and Molly Veldkamp of FTH recommended conducting the counts on a weekday (Wednesday) mid-day and evening and a Saturday mid-day and evening. The last week in July was selected to avoid overlap with special events. The times were selected to measure shopping and dining activity and avoid work commute walking and biking.

The nine count locations (see map below) were selected to intercept pedestrians and bicyclists entering and leaving the district and measure activity at key interior intersections.



Selected intersections:

1. 1<sup>st</sup> and Clayton
2. 1<sup>st</sup> and Fillmore
3. 1<sup>st</sup> and Steele
4. 2<sup>nd</sup> and Columbine
5. 3<sup>rd</sup> and Clayton
6. 2<sup>nd</sup> and Fillmore
7. 3<sup>rd</sup> and Milwaukee
8. 2<sup>nd</sup> and St Paul
9. 2<sup>nd</sup> and Steele

In total between July 2015 and July 2016, the total number of pedestrians and bicycles counted at these nine locations was slightly lower. In 2016, the Wednesday mid-day counts were slightly higher than in 2015, and the counts at the other three times slightly lower. Most importantly, the number of pedestrians outweighs bicycles by about 17 to one.

	<u>Pedestrians</u>	<u>Bicycles</u>
2016	17,154	1020
2015	18,202	1141
Change	-1,048	-121
% Change	-6%	-10%

The following sections of the report detail the counts in 2015 and 2016 and conclude with a comparison of the two years. In both cases, the count numbers were affected by development projects underway and completed. Tables showing all of the counts at each location in each direction are provided at the end of the report.

**2015 Pedestrian and Bike Counts**

Several major construction projects affected counts in 2015:

- RH (Restoration Hardware) on the south side of 1<sup>st</sup> caused closure of the pedestrian crossing of 1<sup>st</sup> at Fillmore
- Columbine-200 block  
 200/250 Columbine—the full block face was under construction with the site and sidewalk fenced  
 Halcyon Hotel, west side, construction site fenced with a pedestrian walkway
- St Paul-100 block  
 100 St Paul construction fencing along St Paul, 1<sup>st</sup> and Steele
- 1<sup>st</sup> and Steele  
 Steele Creek, southeast corner, construction fencing  
 Coda, northeast corner, construction fencing

Pedestrian Counts, 2015

In 2015, the busiest intersection was 2<sup>nd</sup> and Fillmore mid-day on Saturday. More pedestrians were walking east-west on 2<sup>nd</sup> than north-south on Fillmore. The following table shows the counts by intersection and day and time.

Pedestrian Counts by Intersection, July 2015

Intersection	Wed mid-day	Wed evening	Sat mid-day	Sat evening	Total
1 <sup>st</sup> -Clayton	754	667	1,402	638	3,461
1 <sup>st</sup> -Fillmore	185	86	392	128	791
1 <sup>st</sup> -Steele	267	114	214	192	787
2 <sup>nd</sup> -Columbine	628	395	635	342	2,000
3 <sup>rd</sup> -Clayton	448	404	691	572	2,115
2 <sup>nd</sup> -Fillmore	1,030	614	1,555	867	3,886
3 <sup>rd</sup> -Milwaukee	409	327	537	391	1,664
2 <sup>nd</sup> -St Paul	418	270	394	358	1,440
2 <sup>nd</sup> -Steele	<u>568</u>	<u>333</u>	<u>533</u>	<u>444</u>	<u>1,878</u>
<b>Total</b>	<b>4,707</b>	<b>3,210</b>	<b>6,353</b>	<b>3,932</b>	<b>18,202</b>

Just over 18,000 pedestrians were counted at the four time segments. Saturday mid-day was busiest followed by Wednesday mid-day, Saturday evening and Wednesday evening. Also of this total, about 60% were walking east-west and 40% north-south.

Bicycle Counts, 2015

As with walking, the greatest number of bicycles were counted on Saturday mid-day. And likewise, about 60% of the bicycles were traveling east-west rather than north-south.

- Wednesday mid-day 222
- Wednesday evening 215
- Saturday mid-day 409
- Saturday evening 295
- Total 1,141

Unlike pedestrian patterns, the highest number of bicycles were at different intersections at each of the count times.

- Wednesday mid-day 3<sup>rd</sup> and Milwaukee (32/222)
- Wednesday evening 2<sup>nd</sup> and Fillmore (22/215)
- Saturday mid-day 1<sup>st</sup> and Clayton (59/409)
- Saturday evening 3<sup>rd</sup> at Clayton (41/295)

Development Activity

Before proceeding to the 2016 counts, it is important to note the developments that were completed during the year.

- RH (Restoration Hardware) on the south side of 1<sup>st</sup> opened as did the pedestrian crossing of 1<sup>st</sup> at Fillmore

- Columbine-200 block  
 200/250 Columbine on the east side of Columbine opened with residential and office above and retail on the ground floor. Starbucks moved from the corner of 3<sup>rd</sup> and Clayton to 2<sup>nd</sup> and Columbine.  
 Halcyon Hotel, west side, prepared to open in July 2016
- St Paul-100 block  
 100 St Paul was completed with office above and FirstBank and Del Frisco Grill on the ground floor
- 1<sup>st</sup> and Steele  
 Steele Creek apartments were occupied and a number of retail tenants moved into the ground floor including Matsuhisa Restaurant

### 2016 Pedestrian and Bike Counts

Several major construction projects affected counts in 2016:

- Coda, 1<sup>st</sup> and Steele, northeast corner, construction nearing completion
- Milwaukee and 2<sup>nd</sup>—hotel construction sidewalks on both streets fenced off
- Buildings on the east and west side of Fillmore, 200 block, were demolished. On the east side, excavation began for development and on the west side the property was paved as a surface parking lot.
- Named streets from 3<sup>rd</sup> Avenue north were being repaved

#### Pedestrian Counts, 2016

In 2016, the busiest intersection was 2<sup>nd</sup> and Fillmore mid-day on Saturday. More pedestrians were walking east-west on 2<sup>nd</sup> than north-south on Fillmore. The following table shows the counts by intersection and day and time.

#### Pedestrian Counts by Intersection, July 2016

Intersection	Wed mid-day	Wed evening	Sat mid-day	Sat evening	Total
1 <sup>st</sup> -Clayton	537	374	927	501	2,339
1 <sup>st</sup> -Fillmore	345	290	632	387	1,654
1 <sup>st</sup> -Steele	234	223	209	192	858
2 <sup>nd</sup> -Columbine	809	315	749	511	2,384
3 <sup>rd</sup> -Clayton	435	290	749	462	1,936
2 <sup>nd</sup> -Fillmore	1,022	530	1,290	570	3,412
3 <sup>rd</sup> -Milwaukee	474	246	472	246	1,438
2 <sup>nd</sup> -St Paul	467	354	413	338	1,572
2 <sup>nd</sup> -Steele	<u>451</u>	<u>327</u>	<u>382</u>	<u>401</u>	<u>1,561</u>
<b>Total</b>	<b>4,774</b>	<b>2,949</b>	<b>5,823</b>	<b>3,578</b>	<b>17,154</b>

Just over 17,000 pedestrians were counted at the four time segments. Saturday mid-day was busiest followed by Wednesday mid-day, Saturday evening and Wednesday evening. Also of this total, about 60% were walking north-south and 40% east west.

### Bicycle Counts, 2016

As with walking, the greatest number of bicycles were counted on Saturday mid-day. And likewise, about 60% of the bicycles were traveling east-west rather than north-south.

- Wednesday mid-day 195
- Wednesday evening 179
- Saturday mid-day 417
- Saturday evening 229
- Total 1,020

Generally, 3<sup>rd</sup> Avenue was the most used east-west connection, and Clayton the preferred north-south connection. St Paul was also well used; it is the signed bike route connection from 1<sup>st</sup> Avenue north to Colfax and City Park. The intersections and times with the highest bike counts were:

- Wednesday mid-day 1<sup>st</sup> and Clayton (37/195)  
3<sup>rd</sup> and Milwaukee (36/195)
- Wednesday evening 3rd and Clayton (28/179)
- Saturday mid-day 1<sup>st</sup> and Clayton (76/417)
- Saturday evening 1<sup>st</sup> and Clayton (41/229)

### **2015-2016 Comparison**

The number of pedestrians and bicyclists counted at the 9 intersections declined slightly in the year to year comparison. Travel patterns for pedestrians changed from 60% east-west in 2015 to 60% north-south in 2016. 1<sup>st</sup> and Clayton saw the greatest decline in pedestrians counts—3,461 in 2015 and 2,339 in 2016. Not surprisingly, 1<sup>st</sup> and Fillmore saw the greatest gain—1,654 in 2016 and 791 in 2015—given the reopening of the 1<sup>st</sup> Avenue crossing. 1<sup>st</sup> and Steele, 2<sup>nd</sup> and St Paul, and 2<sup>nd</sup> and Columbine also saw increased numbers of pedestrians, reflecting the impact of new developments at these locations.

Two years of counts does not constitute a trend. Counts in coming years will tell us more about the number and location of pedestrians and bicyclists in Cherry Creek North.

**Cherry Creek North Pedestrian Counts, July 2015**

	Wednesday		Saturday	
	12:00-1:30	5:30-7:00	11:00-1:00	6:00-8:00
<u>Pedestrian Counts--East-West</u>				
3rd Avenue				
at Clayton	230	218	346	317
at Milwaukee	230	169	329	263
2nd Avenue				
at Columbine	402	281	398	243
at Fillmore	635	412	885	522
at St Paul	316	193	297	283
at Steele	369	192	318	260
1st Avenue				
at Clayton	490	396	689	305
at Fillmore	185	85	390	124
at Steele	163	51	108	83
<u>Pedestrian Counts--North-South</u>				
Columbine				
at 2nd	226	114	237	99
Clayton				
at 1st	264	271	713	333
at 3rd	218	186	345	255
Fillmore				
at 1st	0	1	2	4
at 2nd	395	202	670	345
Milwaukee				
at 3rd	179	158	208	128
St Paul				
at 2nd	102	77	97	75
Steele				
at 1st	104	63	106	109
at 2nd	199	141	215	184
<b>Total</b>	<b>4707</b>	<b>3210</b>	<b>6353</b>	<b>3932</b>

### Cherry Creek North Bicycle Counts, July 2015

	Wednesday		Saturday	
	12:00-1:30	5:30-7:00	11:00-1:00	6:00-8:00
<u>Bicycle Counts--East-West</u>				
3rd Avenue				
at Clayton	14	19	27	41
at Milwaukee	32	10	13	35
2nd Avenue				
at Columbine	12	17	16	15
at Fillmore	15	20	21	26
at St Paul	0	0	29	9
at Steele	11	17	17	12
1st Avenue				
at Clayton	27	18	59	18
at Fillmore	12	9	33	13
at Steele	6	8	15	15
<u>Bicycle Counts--North-South</u>				
Columbine				
at 2nd	2	2	9	5
Clayton				
at 1st	16	18	45	19
at 3rd	15	14	29	18
Fillmore				
at 1st	2	5	7	11
at 2nd	11	22	15	14
Milwaukee				
at 3rd	13	14	11	12
St Paul				
at 2nd	3	0	16	7
Steele				
at 1st	22	13	33	18
at 2nd	9	9	14	7
	<b>222</b>	<b>215</b>	<b>409</b>	<b>295</b>

**Cherry Creek North Pedestrian Counts, July 2016**

	Wednesday		Saturday	
	12:00-1:30	5:30-7:00	11:00-1:00	6:00-8:00
<b>Pedestrian Counts--East-West</b>				
3rd Avenue				
at Clayton	144	128	331	216
at Milwaukee	196	103	187	85
2nd Avenue				
at Columbine	263	74	266	338
at Fillmore	350	193	501	178
at St Paul	121	126	127	101
at Steele	165	142	167	174
1st Avenue				
at Clayton	225	188	493	246
at Fillmore	147	121	246	168
at Steele	127	113	93	97
<b>Pedestrian Counts--North-South</b>				
Columbine				
at 2nd	546	241	483	173
Clayton				
at 1st	312	186	434	255
at 3rd	291	162	418	246
Fillmore				
at 1st	198	169	386	219
at 2nd	672	337	789	392
Milwaukee				
at 3rd	278	143	285	161
St Paul				
at 2nd	346	228	286	237
Steele				
at 1st	107	110	116	95
at 2nd	286	185	215	227
<b>Total</b>	<b>4774</b>	<b>2949</b>	<b>5823</b>	<b>3608</b>



**Cherry Creek North Bicycle Counts, July 2016**

	Wednesday		Saturday	
	12:00-1:30	5:30-7:00	11:00-1:00	6:00-8:00
<u>Bicycle Counts--East-West</u>				
3rd Avenue				
at Clayton	18	21	40	13
at Milwaukee	25	17	29	26
2nd Avenue				
at Columbine	17	12	31	7
at Fillmore	17	10	33	15
at St Paul	11	15	23	20
at Steele	7	17	21	6
1st Avenue				
at Clayton	21	10	31	18
at Fillmore	4	10	26	9
at Steele	6	10	12	15
<u>Bicycle Counts--North-South</u>				
Columbine				
at 2nd	5	5	10	7
Clayton				
at 1st	16	9	45	23
at 3rd	9	7	26	5
Fillmore				
at 1st	2	1	7	5
at 2nd	8	3	20	14
Milwaukee				
at 3rd	9	9	27	12
St Paul				
at 2nd	10	10	17	19
Steele				
at 1st	4	9	14	9
at 2nd	6	4	5	6
	<b>195</b>	<b>179</b>	<b>417</b>	<b>229</b>